

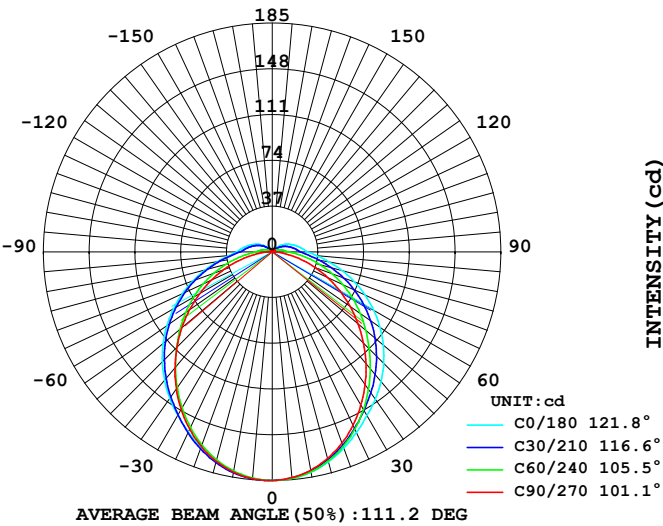
LUMINAIRE PHOTOMETRIC TEST REPORT

Report number:

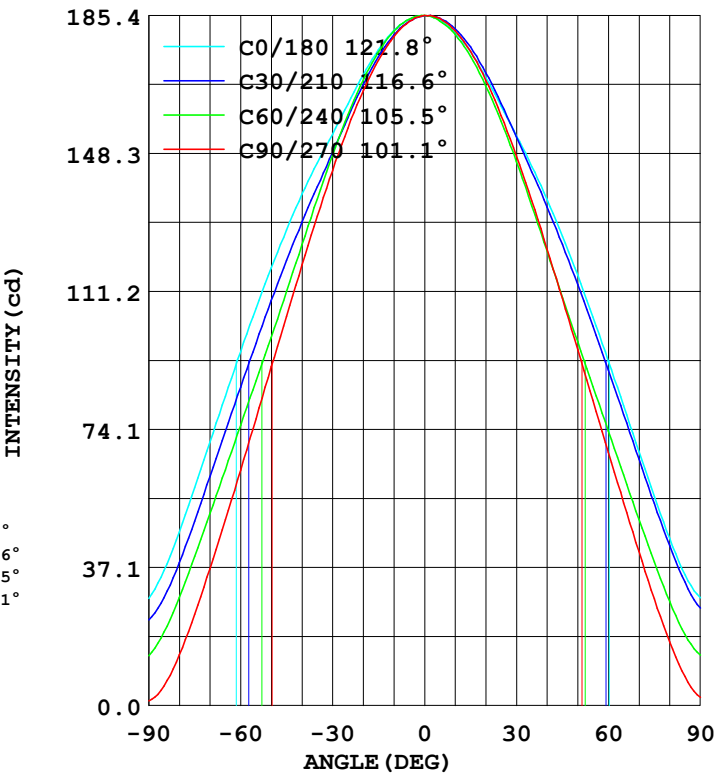
MANUFACTURER:		
Address:		
NAME: 200mA 4000K with trim	TYPE:	WEIGHT: 0.5
SPECIFICATION:	DIMENSION: 0.245*0.125*0.07	SERIAL No.:

DATA OF LAMP		Imax(cd)	185.3	S/MH (C0/180)	1.24
MODEL		EFFICIENCY (%)	100.0	S/MH (C90/270)	1.16
NOMINAL POWER(W)	7	TOTAL FLUX(lm)	586.77	Voltage(V)	229.6
RATED VOLTAGE (V)	230	EFFICIENCY (lm/W)	86.4	Current(A)	0.033
NOMINAL FLUX(lm)	586.8	η up (%)	7.9	Power(W)	6.790
LAMPS QUANTITY	1	η down (%)	92.1	Power Factor (PF)	0.891
TEST VOLTAGE (V)	229.7	Effective Flux(lm)	552.3	EEI	0.000 (E)

LUMINOUS INTENSITY DISTRIBUTION



LUMINOUS INTENSITY DISTRIBUTION



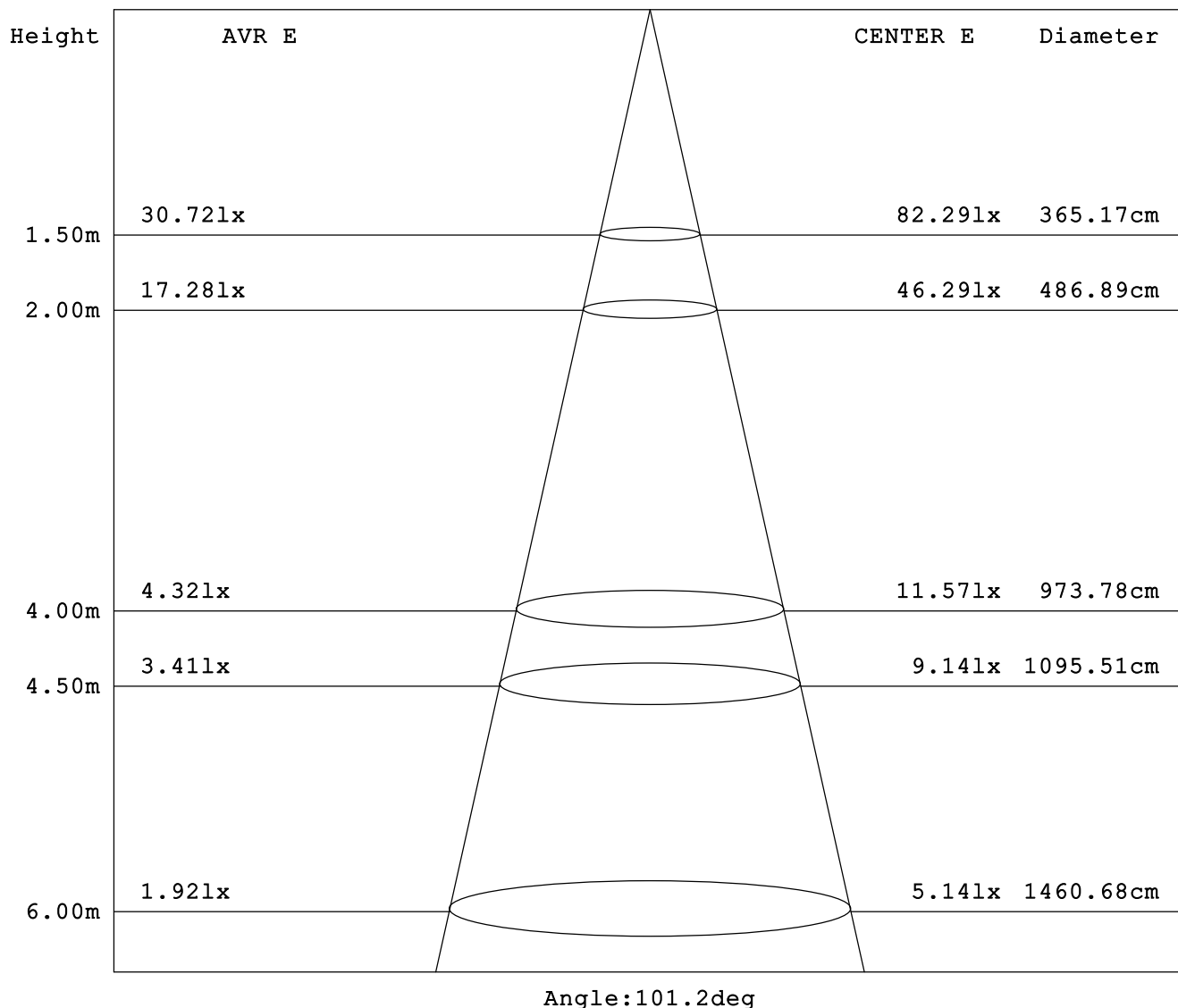
Test System:HopooColor HPG1800
Temperature:25.3DEG
Operators:W
Test Date:2023年07月04日

Test Set: 5.0deg/s C-Gamma (TYPE C)
Humidity:65.0%
Test Distance:8.450 m
Remarks:

AVERAGE AND CENTER E Figure

Report number:

MANUFACTURER:		
Address:		
NAME: 200mA 4000K with trim	TYPE:	WEIGHT: 0.5
SPECIFICATION:	DIMENSION: 0.245*0.125*0.07	SERIAL No.:



Test System: HopooColor HPG1800
 Temperature: 25.3DEG
 Operators: W
 Test Date: 2023年07月04日

Test Set: 5.0deg/s C-Gamma (TYPE C)
 Humidity: 65.0%
 Test Distance: 8.450 m
 Remarks:

ZONAL FLUX DIAGRAM

Report number:

MANUFACTURER:		
Address:		
NAME: 200mA 4000K with trim	TYPE:	WEIGHT: 0.5
SPECIFICATION:	DIMENSION: 0.245*0.125*0.07	SERIAL No.:

γ	C0	C45	C90	C135	C180	C225	C270	C315	γ	Zone	total
5.0	184.2	184.0	183.6	183.9	184.0	184.1	184.5	184.0	0- 5	4.415	4.415
10.0	181.2	180.5	179.5	180.5	180.7	180.9	181.1	180.7	5- 10	13.05	17.46
15.0	176.1	174.8	173.2	174.9	175.5	175.5	175.6	175.3	10- 15	21.11	38.57
20.0	169.2	167.3	165.1	167.5	168.6	168.1	167.9	167.8	15- 20	28.26	66.83
25.0	161.5	158.2	155.0	158.6	161.0	159.2	158.4	158.8	20- 25	34.25	101.0
30.0	153.4	148.1	143.5	148.5	152.9	149.3	147.5	148.7	25- 30	38.93	140.0
35.0	145.6	137.6	131.4	138.0	144.7	138.7	135.5	138.0	30- 35	42.32	182.3
40.0	137.3	126.7	118.2	127.1	135.8	127.9	122.4	127.2	35- 40	44.41	226.7
45.0	127.7	115.3	104.5	115.6	125.9	116.7	109.3	115.9	40- 45	45.14	271.9
50.0	117.4	103.8	90.96	104.0	115.6	105.3	95.53	104.5	45- 50	44.60	316.5
55.0	106.6	92.28	76.97	92.50	104.3	93.78	81.97	93.03	50- 55	42.88	359.4
60.0	95.03	80.36	63.19	80.54	92.46	81.89	68.04	81.18	55- 60	40.03	399.4
65.0	82.96	68.43	49.91	68.65	80.54	70.01	54.40	69.26	60- 65	36.20	435.6
70.0	70.83	56.55	36.77	56.80	68.26	58.12	41.41	57.37	65- 70	31.52	467.1
75.0	58.47	44.73	24.41	45.09	56.19	46.41	28.70	45.55	70- 75	26.24	493.4
80.0	46.55	33.70	13.63	34.27	44.91	35.45	17.06	34.41	75- 80	20.66	514.0
85.0	36.27	24.31	5.212	25.13	35.13	26.09	7.782	24.88	80- 85	15.35	529.4
90.0	28.77	18.17	1.213	19.17	28.91	19.88	2.213	18.38	85- 90	11.16	540.5
95.0	25.49	15.45	0.928	16.42	25.91	16.99	1.142	15.60	90- 95	8.942	549.5
100.0	22.63	13.28	1.000	14.03	22.92	14.60	1.142	13.38	95-100	7.710	557.2
105.0	19.99	11.21	1.142	11.78	20.13	12.35	1.213	11.31	100-105	6.554	563.8
110.0	17.35	9.210	1.213	9.639	17.56	10.17	1.285	9.318	105-110	5.446	569.2
115.0	14.92	7.283	1.356	7.568	14.92	8.104	1.356	7.390	110-115	4.376	573.6
120.0	12.49	5.497	1.499	5.747	12.35	6.247	1.499	5.747	115-120	3.391	577.0
125.0	10.06	4.105	1.570	4.177	9.853	4.712	1.570	4.462	120-125	2.534	579.5
130.0	7.497	3.034	1.713	3.070	7.140	3.570	1.713	3.391	125-130	1.853	581.4
135.0	5.069	2.177	1.785	2.213	4.712	2.606	1.785	2.499	130-135	1.288	582.6
140.0	2.927	1.963	1.927	1.927	2.641	1.999	1.927	1.999	135-140	0.869	583.5
145.0	2.142	1.999	1.999	1.999	2.142	2.106	2.070	2.106	140-145	0.688	584.2
150.0	2.142	2.142	2.142	2.070	2.213	2.177	2.142	2.177	145-150	0.620	584.8
155.0	2.213	2.177	2.213	2.142	2.284	2.213	2.213	2.213	150-155	0.550	585.4
160.0	2.213	2.249	2.284	2.213	2.356	2.284	2.284	2.284	155-160	0.470	585.8
165.0	2.284	2.284	2.284	2.284	2.427	2.356	2.356	2.356	160-165	0.379	586.2
170.0	2.356	2.356	2.356	2.320	2.427	2.391	2.427	2.427	165-170	0.279	586.5
175.0	2.427	2.391	2.356	2.356	2.499	2.427	2.427	2.427	170-175	0.171	586.7
180.0	2.427	2.427	2.427	2.427	2.427	2.427	2.427	2.427	175-180	0.058	586.7
DEG	LUMINOUS INTENSITY:cd									UNIT:lm	

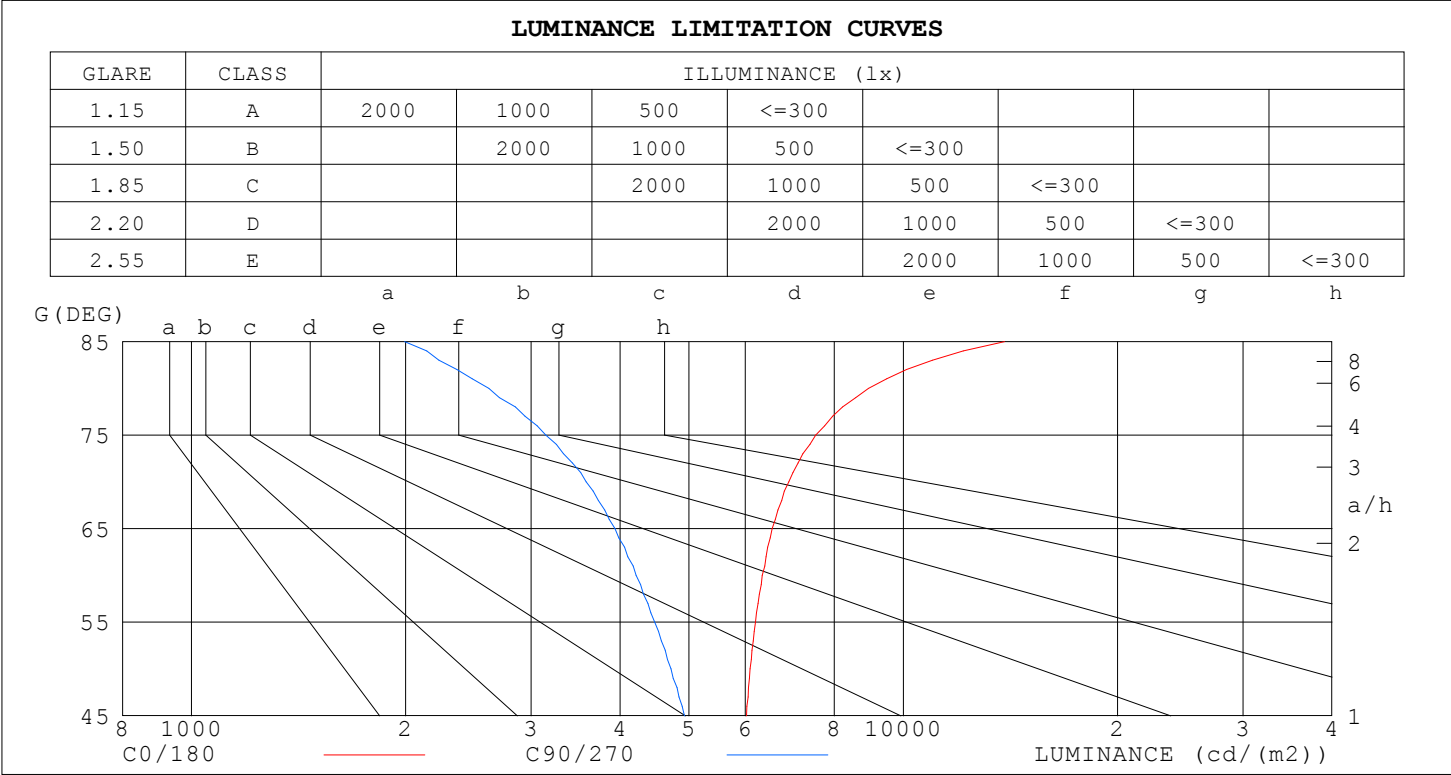
Test System:HopooColor HPG1800
Temperature:25.3DEG
Operators:W
Test Date:2023年07月04日

Test Set: 5.0deg/s C-Gamma (TYPE C)
Humidity:65.0%
Test Distance:8.450 m
Remarks:

LUMINANCE LIMITATION CURVES

Report number:

MANUFACTURER:					
Address:					
NAME: 200mA 4000K with trim		TYPE:		WEIGHT: 0.5	
SPECIFICATION:		DIMENSION: 0.245*0.125*0.07		SERIAL No.:	



LUMINANCE cd/m2		
G (DEG)	C0/180	C90/270
85	13873	1994
80	8937	2618
75	7531	3145
70	6903	3584
65	6544	3937
60	6336	4213
55	6199	4473
50	6091	4717
45	6022	4928

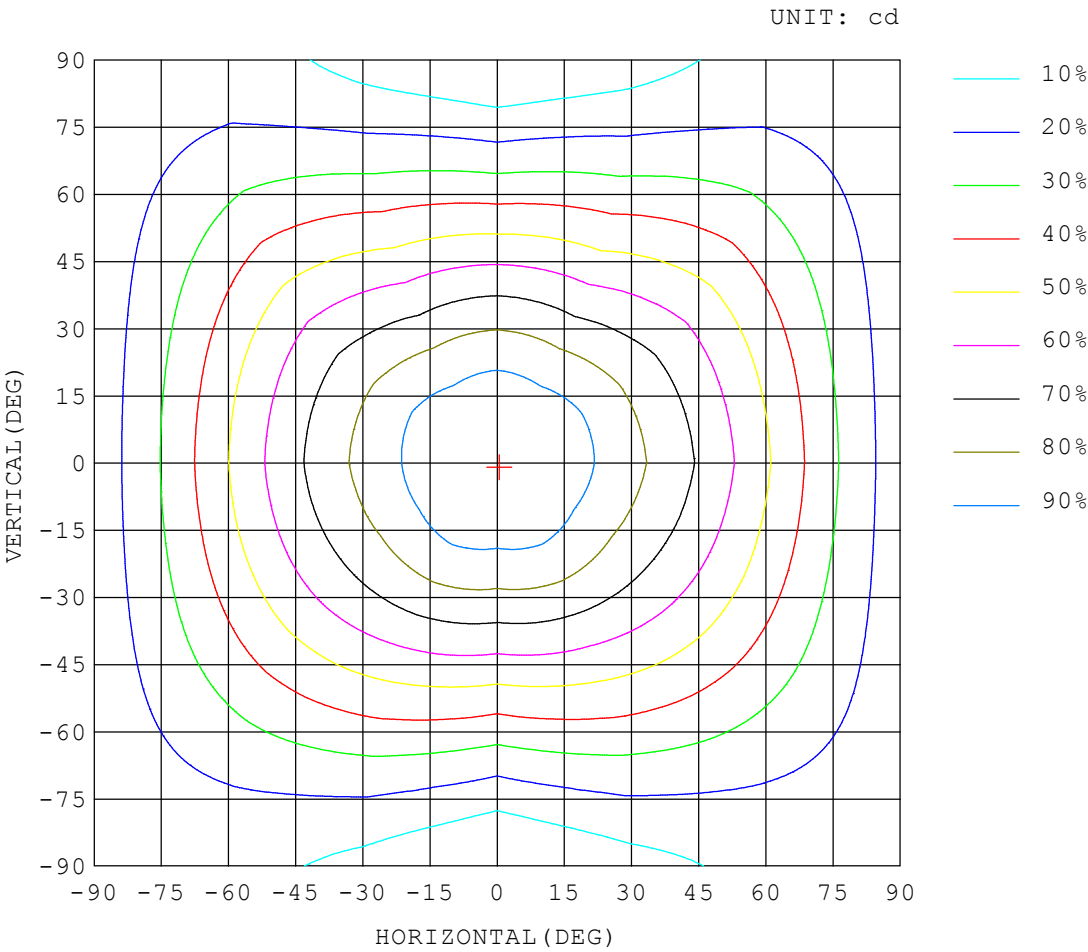
Test System:HopooColor HPG1800
Temperature:25.3DEG
Operators:W
Test Date:2023年07月04日

Test Set: 5.0deg/s C-Gamma (TYPE C)
Humidity:65.0%
Test Distance:8.450 m
Remarks:

ISOCANDELA DIAGRAM

Report number:

MANUFACTURER:		
Address:		
NAME: 200mA 4000K with trim	TYPE:	WEIGHT: 0.5
SPECIFICATION:	DIMENSION: 0.245*0.125*0.07	SERIAL No.:



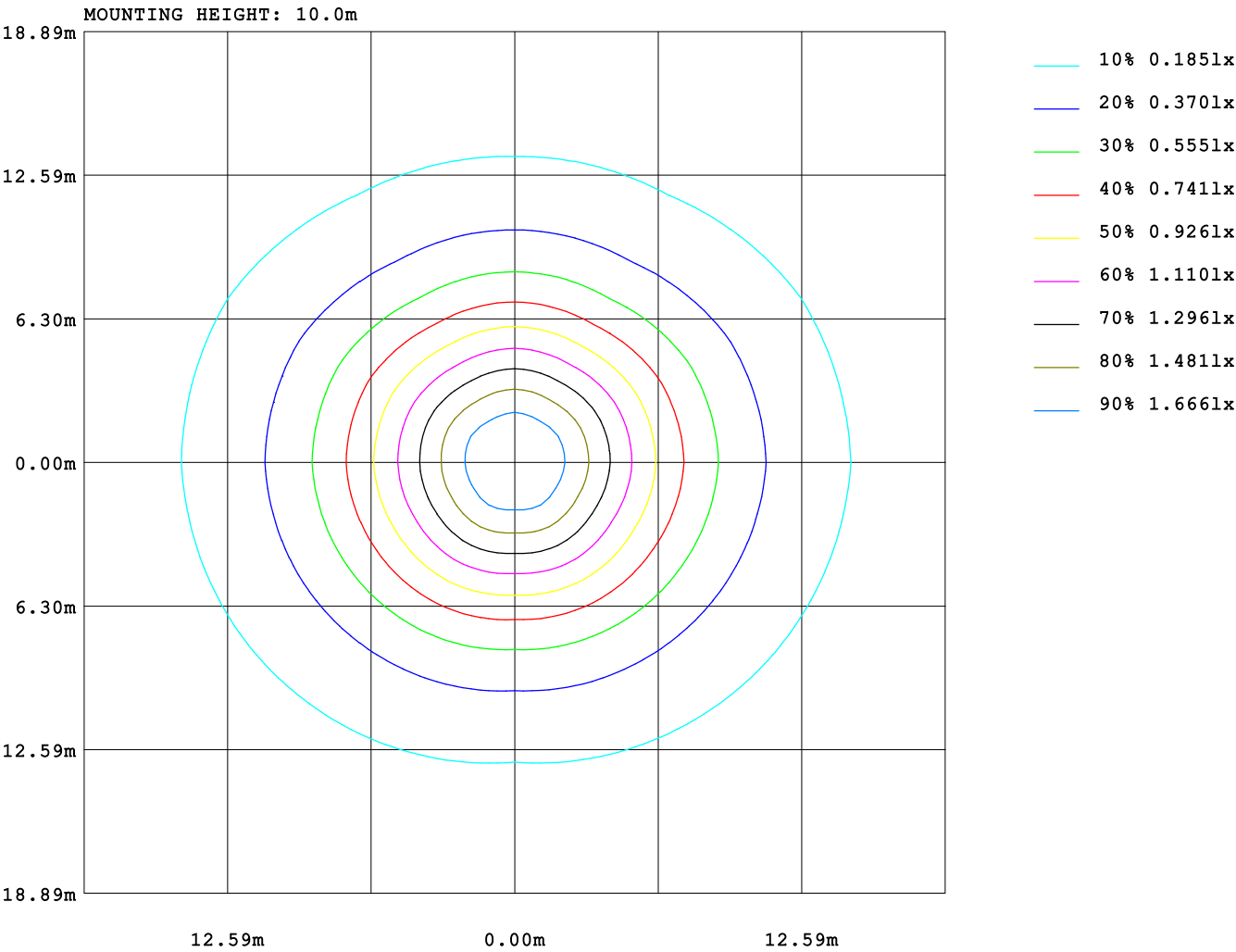
Test System:HopooColor HPG1800
Temperature:25.3DEG
Operators:W
Test Date:2023年07月04日

Test Set: 5.0deg/s C-Gamma (TYPE C)
Humidity:65.0%
Test Distance:8.450 m
Remarks:

ISOLUX DIAGRAM

Report number:

MANUFACTURER:		
Address:		
NAME: 200mA 4000K with trim	TYPE:	WEIGHT: 0.5
SPECIFICATION:	DIMENSION: 0.245*0.125*0.07	SERIAL No.:



Test System:HopooColor HPG1800
Temperature:25.3DEG
Operators:W
Test Date:2023年07月04日

Test Set: 5.0deg/s C-Gamma (TYPE C)
Humidity:65.0%
Test Distance:8.450 m
Remarks:

AREA LUMINOUS FLUX

Report number:

MANUFACTURER:																				
Address:																				
NAME: 200mA 4000K with trim									TYPE:						WEIGHT: 0.5					
SPECIFICATION:									DIMENSION: 0.245*0.125*0.07						SERIAL No.:					

VERTICAL (DEG)	AREA FLUX DIAGRAM																		UNIT:lm		Φ t	Φ a
	0.08	0.23	0.37	0.48	0.52	0.51	0.47	0.40	0.31	0.30	0.38	0.44	0.48	0.49	0.46	0.36	0.22	0.08	6.58	4.48		
90																						
80																						
70	0.08	0.26	0.46	0.66	0.80	0.89	0.94	0.96	0.92	0.91	0.94	0.91	0.86	0.78	0.65	0.46	0.25	0.08	11.8	11.7		
60	0.08	0.29	0.57	0.88	1.14	1.36	1.52	1.65	1.68	1.67	1.63	1.49	1.33	1.13	0.87	0.57	0.29	0.08	18.2	18.2		
50	0.09	0.33	0.68	1.11	1.51	1.86	2.12	2.36	2.48	2.47	2.34	2.09	1.83	1.50	1.10	0.68	0.33	0.09	25.0	25.0		
40	0.09	0.36	0.79	1.32	1.87	2.35	2.73	3.07	3.29	3.28	3.04	2.70	2.33	1.86	1.32	0.79	0.37	0.09	31.7	31.7		
30	0.10	0.40	0.88	1.50	2.19	2.81	3.32	3.75	4.06	4.05	3.73	3.30	2.80	2.19	1.51	0.89	0.41	0.10	38.0	38.0		
	0.10	0.42	0.95	1.64	2.43	3.21	3.85	4.37	4.74	4.73	4.36	3.84	3.20	2.44	1.66	0.97	0.43	0.10	43.5	43.5		
	0.10	0.44	1.00	1.75	2.60	3.45	4.25	4.87	5.24	5.24	4.86	4.23	3.45	2.61	1.78	1.03	0.46	0.10	47.5	47.5		
	0.10	0.45	1.03	1.81	2.69	3.58	4.41	5.13	5.52	5.52	5.13	4.42	3.59	2.72	1.84	1.06	0.47	0.10	49.6	49.6		
	0.10	0.45	1.03	1.80	2.67	3.56	4.38	5.09	5.51	5.51	5.09	4.39	3.57	2.71	1.84	1.06	0.47	0.10	49.4	49.4		
	0.10	0.44	0.99	1.72	2.55	3.39	4.16	4.85	5.23	5.23	4.84	4.16	3.39	2.57	1.75	1.01	0.45	0.10	47.0	47.0		
-30	0.10	0.41	0.93	1.60	2.36	3.12	3.82	4.40	4.69	4.69	4.39	3.81	3.12	2.37	1.62	0.95	0.43	0.10	42.9	42.9		
-40	0.09	0.39	0.85	1.44	2.10	2.75	3.33	3.78	3.99	3.98	3.77	3.32	2.75	2.11	1.45	0.86	0.40	0.10	37.5	37.5		
-50	0.09	0.35	0.75	1.25	1.80	2.32	2.76	3.07	3.19	3.19	3.06	2.74	2.31	1.80	1.26	0.76	0.36	0.09	31.2	31.2		
-60	0.09	0.31	0.64	1.04	1.46	1.85	2.16	2.34	2.38	2.38	2.33	2.15	1.84	1.45	1.04	0.65	0.32	0.09	24.5	24.5		
-70	0.08	0.28	0.53	0.82	1.10	1.37	1.55	1.62	1.57	1.57	1.61	1.54	1.36	1.10	0.81	0.53	0.28	0.08	17.8	17.8		
-80	0.08	0.24	0.43	0.61	0.77	0.90	0.97	0.93	0.83	0.82	0.92	0.96	0.89	0.76	0.60	0.42	0.24	0.08	11.4	11.3		
-90	0.08	0.22	0.35	0.45	0.50	0.52	0.49	0.39	0.26	0.25	0.38	0.47	0.50	0.48	0.43	0.34	0.21	0.07	6.38	4.42		
-90 -80 -70 -60 -50 -40 -30 -20 HORIZONTAL (DEG) 20 30 40 50 60 70 80 90																						
Φ t	1.61	6.26	13.2	21.9	31.1	39.8	47.3	53.1	55.9	55.8	52.8	47.0	39.6	31.1	22.0	13.4	6.39	1.64	587			
Φ a	1.61	6.26	13.2	21.9	31.1	39.5	46.8	52.4	55.3	55.2	52.2	46.4	39.3	31.0	22.0	13.4	6.39	1.64		552		

Test System:HopooColor HPG1800
Temperature:25.3DEG
Operators:W
Test Date:2023年07月04日

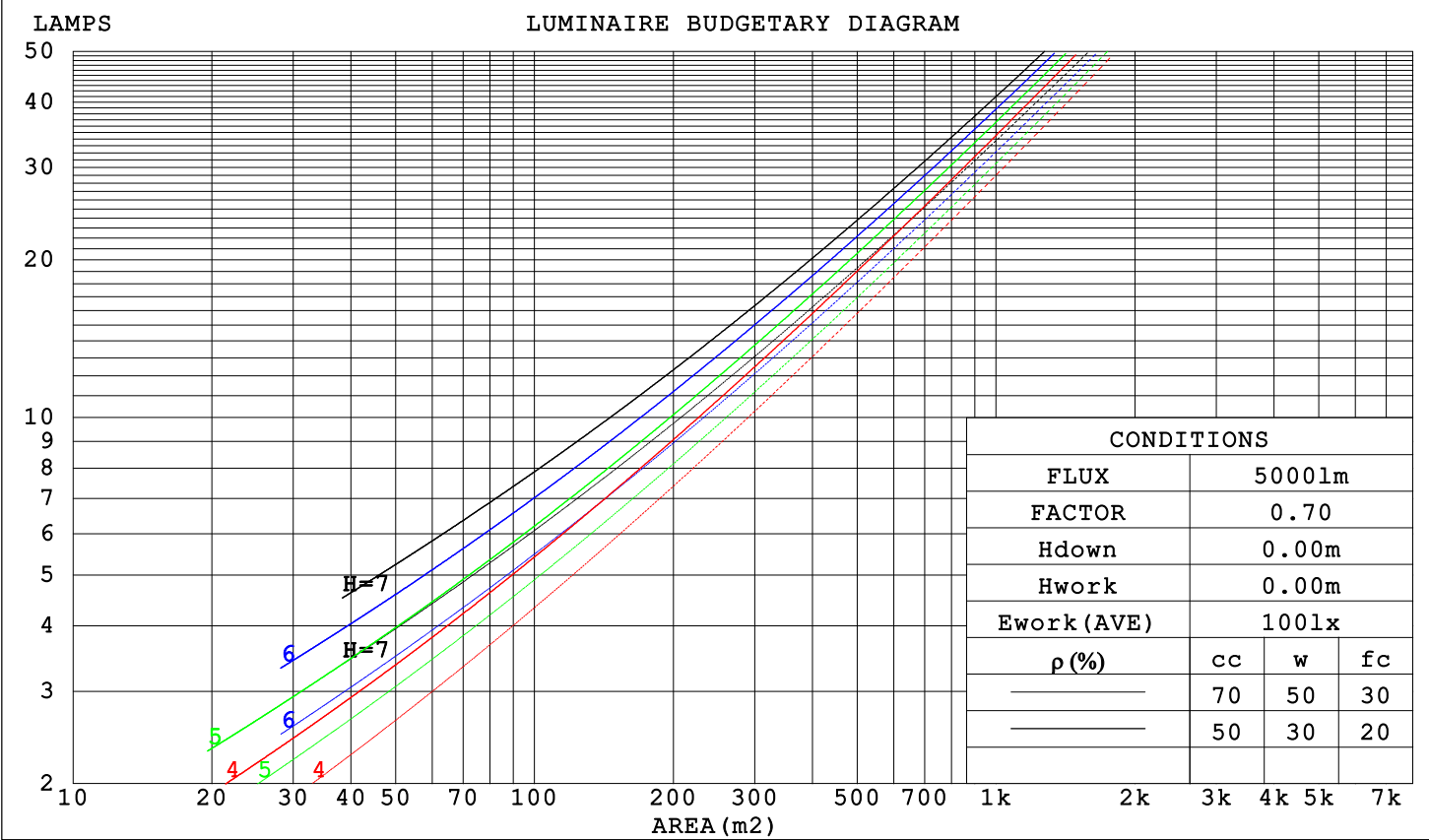
Test Set: 5.0deg/s C-Gamma (TYPE C)
Humidity:65.0%
Test Distance:8.450 m
Remarks:

CU AND LUMINAIRE BUDGETARY ESTIMATE DIAGRAM

Report number:

MANUFACTURER:															
Address:															
NAME: 200mA 4000K with trim								TYPE:				WEIGHT: 0.5			
SPECIFICATION:								DIMENSION: 0.245*0.125*0.07				SERIAL No.:			

pcc	80%			70%			50%			30%			10%			0
pw	50%	30%	10%	50%	30%	10%	50%	30%	10%	50%	30%	10%	50%	30%	10%	0
pfc	20%			20%			20%			20%			20%			0
RCR	RCR:Room Cavity Ratio			Coefficients of Utilization(CU)												
0.0	1.17	1.17	1.17	1.14	1.14	1.14	1.07	1.07	1.07	1.01	1.01	1.01	.95	.95	.95	.92
1.0	1.00	.96	.91	.97	.93	.89	.91	.88	.85	.86	.83	.81	.81	.79	.77	.74
2.0	.87	.80	.73	.84	.78	.72	.79	.74	.69	.75	.70	.66	.71	.67	.64	.61
3.0	.76	.67	.61	.74	.66	.60	.70	.63	.58	.66	.60	.56	.62	.58	.54	.51
4.0	.67	.58	.51	.65	.57	.50	.62	.55	.49	.58	.52	.47	.55	.50	.46	.43
5.0	.60	.51	.44	.58	.50	.43	.55	.48	.42	.52	.46	.41	.50	.44	.40	.37
6.0	.54	.45	.38	.52	.44	.38	.50	.42	.37	.47	.41	.36	.45	.39	.35	.33
7.0	.49	.40	.34	.48	.39	.33	.45	.38	.33	.43	.37	.32	.41	.35	.31	.29
8.0	.44	.36	.30	.43	.35	.30	.41	.34	.29	.40	.33	.28	.38	.32	.28	.26
9.0	.41	.33	.27	.40	.32	.27	.38	.31	.26	.37	.30	.26	.35	.29	.25	.23
10.0	.38	.30	.24	.37	.29	.24	.35	.28	.24	.34	.28	.23	.32	.27	.23	.21



Test System:HopooColor HPG1800
Temperature:25.3DEG
Operators:W
Test Date:2023年07月04日

Test Set: 5.0deg/s C-Gamma (TYPE C)
Humidity:65.0%
Test Distance:8.450 m
Remarks:

WEC AND CCEC

Report number:

MANUFACTURER:															
Address:															
NAME: 200mA 4000K with trim								TYPE:				WEIGHT: 0.5			
SPECIFICATION:								DIMENSION: 0.245*0.125*0.07				SERIAL No.:			

pcc	80%			70%			50%			30%			10%			0
pw	50%	30%	10%	50%	30%	10%	50%	30%	10%	50%	30%	10%	50%	30%	10%	0
pf _c	20%			20%			20%			20%			20%			0
RCR	RCR:Room Cavity Ratio						Wall Exitance Coefficients (WEC)									
0.0																
1.0	.342	.195	.062	.333	.190	.060	.315	.181	.058	.298	.172	.055	.283	.164	.053	
2.0	.308	.169	.052	.300	.165	.051	.284	.158	.049	.269	.151	.047	.255	.144	.046	
3.0	.280	.149	.045	.272	.146	.044	.258	.140	.042	.244	.134	.041	.232	.129	.040	
4.0	.255	.133	.039	.248	.130	.038	.235	.125	.037	.223	.120	.036	.212	.115	.035	
5.0	.234	.119	.035	.228	.117	.034	.216	.113	.033	.205	.108	.032	.195	.104	.031	
6.0	.216	.108	.031	.210	.106	.031	.200	.102	.030	.190	.099	.029	.181	.095	.028	
7.0	.200	.099	.028	.195	.097	.028	.186	.094	.027	.177	.091	.026	.168	.088	.026	
8.0	.186	.091	.026	.182	.090	.025	.173	.087	.025	.165	.084	.024	.157	.081	.024	
9.0	.174	.084	.024	.170	.083	.023	.162	.080	.023	.155	.078	.022	.148	.075	.022	
10.0	.163	.078	.022	.160	.077	.022	.153	.075	.021	.146	.072	.021	.139	.070	.020	

pcc	80%			70%			50%			30%			10%			0
pw	50%	30%	10%	50%	30%	10%	50%	30%	10%	50%	30%	10%	50%	30%	10%	0
pf _c	20%			20%			20%			20%			20%			0
RCR	RCR:Room Cavity Ratio						Ceiling Cavity Exitance Coefficients (CCEC)									
0.0	.250	.250	.250	.214	.214	.214	.146	.146	.146	.084	.084	.084	.027	.027	.027	
1.0	.243	.216	.192	.208	.186	.165	.142	.128	.114	.082	.074	.067	.026	.024	.022	
2.0	.235	.193	.157	.202	.166	.136	.138	.115	.095	.080	.067	.055	.026	.022	.018	
3.0	.228	.176	.134	.195	.151	.116	.134	.105	.082	.077	.061	.048	.025	.020	.016	
4.0	.220	.163	.119	.189	.140	.103	.130	.098	.073	.075	.057	.043	.024	.019	.014	
5.0	.212	.152	.108	.182	.132	.094	.126	.092	.067	.073	.054	.039	.023	.018	.013	
6.0	.205	.144	.101	.176	.125	.088	.121	.087	.062	.070	.051	.037	.023	.017	.012	
7.0	.198	.137	.095	.170	.119	.083	.118	.084	.059	.068	.049	.035	.022	.016	.012	
8.0	.191	.132	.091	.165	.114	.079	.114	.080	.056	.066	.047	.033	.021	.016	.011	
9.0	.185	.127	.087	.160	.110	.076	.111	.077	.054	.064	.046	.032	.021	.015	.011	
10.0	.179	.123	.085	.155	.106	.074	.107	.075	.053	.063	.044	.031	.020	.015	.010	

Test System:HopooColor HPG1800
Temperature:25.3DEG
Operators:W
Test Date:2023年07月04日

Test Set: 5.0deg/s C-Gamma (TYPE C)
Humidity:65.0%
Test Distance:8.450 m
Remarks:

Uncorrected UGR Table

Report number:

MANUFACTURER:		
Address:		
NAME: 200mA 4000K with trim	TYPE:	WEIGHT: 0.5
SPECIFICATION:	DIMENSION: 0.245*0.125*0.07	SERIAL No.:

ceiling/cavity	0.7	0.7	0.5	0.5	0.3	0.7	0.7	0.5	0.5	0.3	
walls	0.5	0.3	0.5	0.3	0.3	0.5	0.3	0.5	0.3	0.3	
working plane	0.2	0.2	0.2	0.2	0.2	0.2	0.2	0.2	0.2	0.2	
Room dimensions	Viewed crosswise					Viewed endwise					
x = 2H y = 2H	18.8	20.2	19.2	20.6	20.9	17.4	18.8	17.8	19.2	19.5	
	20.8	22.2	21.3	22.6	23.0	18.8	20.1	19.2	20.5	20.9	
	21.9	23.1	22.3	23.5	24.0	19.3	20.5	19.7	20.9	21.4	
	22.9	24.1	23.4	24.5	25.0	19.6	20.8	20.1	21.2	21.7	
	23.5	24.6	23.9	25.0	25.5	19.7	20.8	20.2	21.3	21.7	
	24.1	25.2	24.5	25.6	26.1	19.7	20.8	20.2	21.3	21.7	
4H	2H	19.3	20.6	19.7	21.0	21.4	18.3	19.5	18.7	19.9	20.3
	3H	21.6	22.7	22.0	23.1	23.6	19.9	21.0	20.4	21.4	21.9
	4H	22.8	23.8	23.2	24.2	24.7	20.6	21.6	21.1	22.1	22.6
	6H	24.0	24.9	24.5	25.4	25.9	21.1	22.0	21.6	22.5	23.0
	8H	24.6	25.5	25.2	26.0	26.5	21.2	22.1	21.8	22.6	23.2
	12H	25.4	26.1	25.9	26.7	27.2	21.3	22.1	21.9	22.6	23.2
8H	4H	23.0	23.9	23.6	24.4	24.9	21.2	22.0	21.7	22.5	23.1
	6H	24.5	25.2	25.0	25.7	26.3	22.0	22.7	22.5	23.2	23.8
	8H	25.3	25.9	25.9	26.5	27.1	22.3	22.9	22.9	23.5	24.1
	12H	26.2	26.8	26.8	27.4	28.0	22.6	23.1	23.1	23.7	24.3
12H	4H	23.0	23.8	23.6	24.3	24.9	21.3	22.1	21.9	22.6	23.2
	6H	24.6	25.2	25.1	25.8	26.4	22.3	22.9	22.8	23.4	24.1
	8H	25.5	26.0	26.0	26.6	27.2	22.7	23.2	23.3	23.8	24.5

Variations with the observer position at spacings:

S = 1.0H	+ 0.1 / - 0.1	+ 0.1 / - 0.2
1.5H	+ 0.2 / - 0.2	+ 0.2 / - 0.3
2.0H	+ 0.2 / - 0.3	+ 0.2 / - 0.4

CIE Pub.117 Corrected 586.7 lm Total Lamp Luminous Flux.(8log(F/F0) = -1.9)

Test System:HopooColor HPG1800
 Temperature:25.3DEG
 Operators:W
 Test Date:2023年07月04日

Test Set: 5.0deg/s C-Gamma (TYPE C)
 Humidity:65.0%
 Test Distance:8.450 m
 Remarks:

Report number:

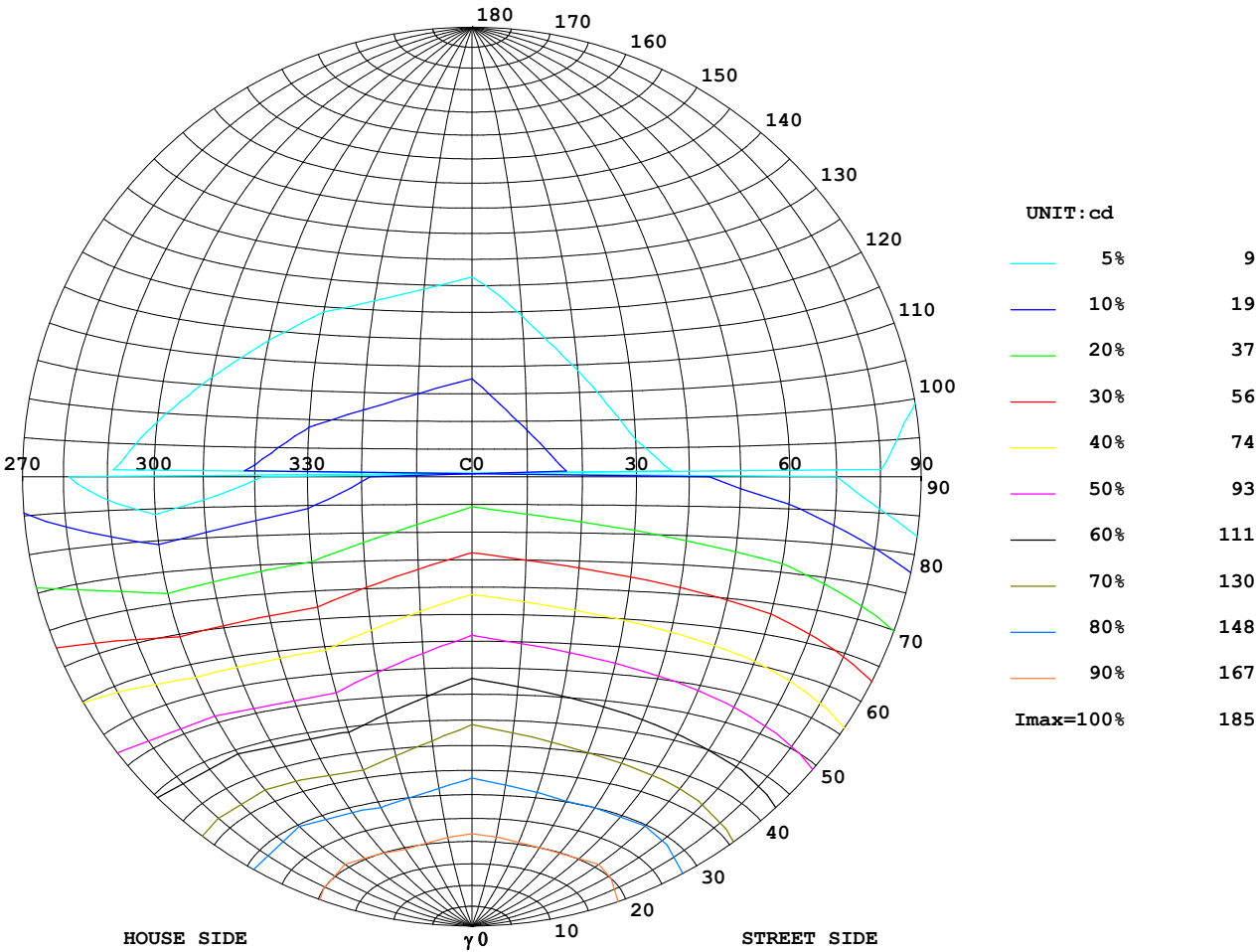
REFLECTANCE										
Ceiling	0.8	0.8	0.8	0.7	0.7	0.7	0.5	0.5	0.5	0
Walls	0.7	0.5	0.3	0.7	0.5	0.3	0.7	0.5	0.3	0
Working plane	0.2	0.2	0.2	0.2	0.2	0.2	0.2	0.2	0.2	0
ROOM INDEX	UTILIZATION FACTORS (PERCENT) $k(RI) \times RCR = 5$									
$k = 0.60$	54	42	35	53	42	35	51	41	34	28
0.80	63	51	44	62	51	43	60	50	43	36
1.00	71	60	52	70	59	51	67	60	51	43
1.25	78	67	59	77	66	59	73	64	58	49
1.50	83	72	65	81	71	64	77	69	63	54
2.00	90	81	73	88	79	72	84	76	70	61
2.50	94	86	79	92	84	77	87	80	75	65
3.00	98	90	84	95	88	82	90	84	79	69
4.00	102	95	90	99	93	88	94	89	85	73
5.00	105	99	94	102	97	92	96	92	88	76
ROOM INDEX	UF (total)									Direct
According to DIN EN 13032-2 2004				Suspended				SHRNOM = 1.25		

Test Set: 5.0deg/s C-Gamma (TYPE C)
Humidity:65.0%
Test Distance:8.450 m
Remarks:

ISOCANDELA DIAGRAM

Report number:

MANUFACTURER:		
Address:		
NAME: 200mA 4000K with trim	TYPE:	WEIGHT: 0.5
SPECIFICATION:	DIMENSION: 0.245*0.125*0.07	SERIAL No.:



Test System:HopooColor HPG1800
Temperature:25.3DEG
Operators:W
Test Date:2023年07月04日

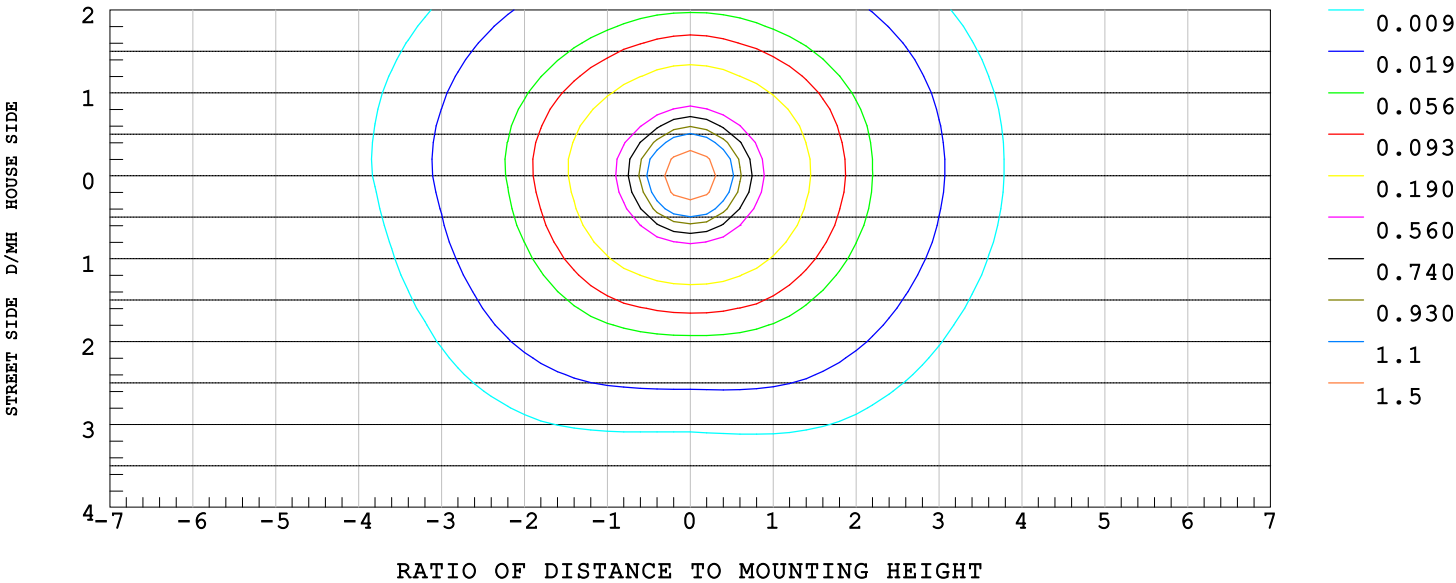
Test Set: 5.0deg/s C-Gamma (TYPE C)
Humidity:65.0%
Test Distance:8.450 m
Remarks:

ISOLUX DIAGRAM

Report number:

MANUFACTURER:		
Address:		
NAME: 200mA 4000K with trim	TYPE:	WEIGHT: 0.5
SPECIFICATION:	DIMENSION: 0.245*0.125*0.07	SERIAL No.:

ILLUMINANCE AT MH=10 m,Enadir = 1.85 lx



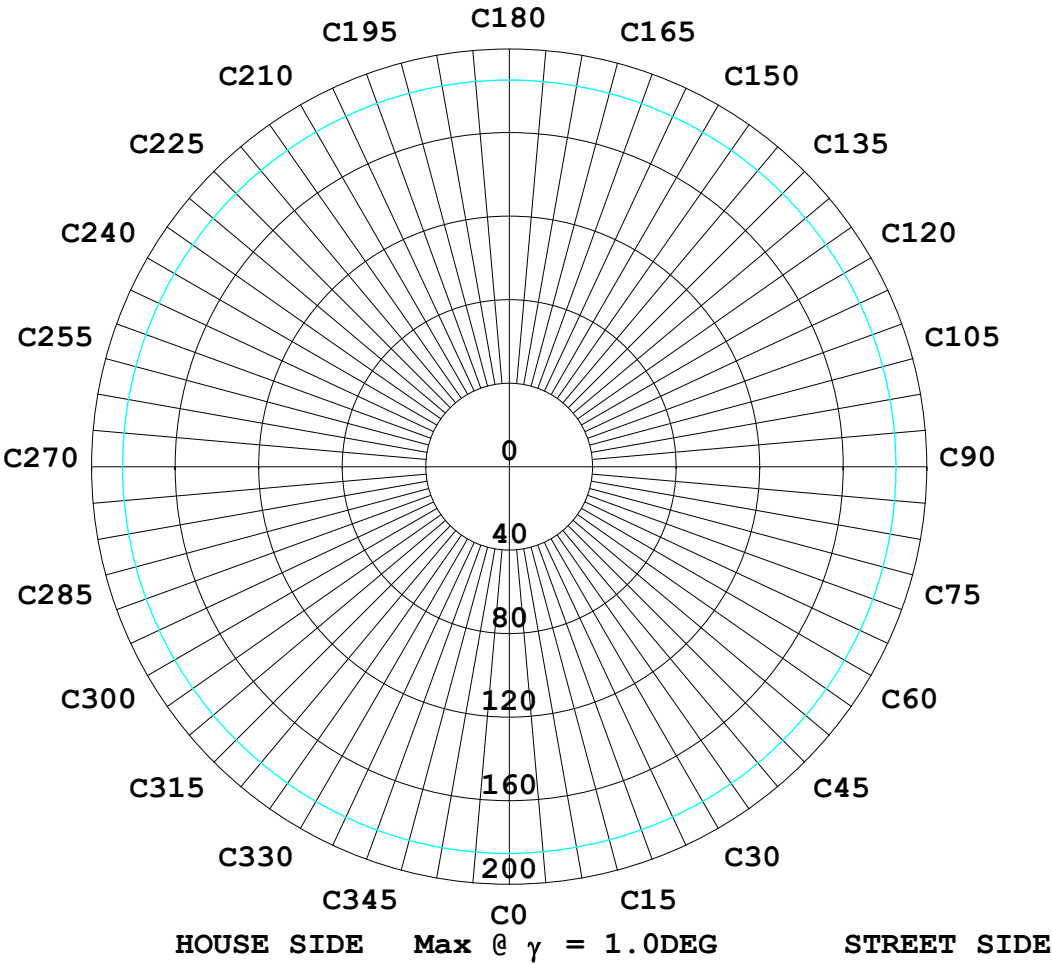
Test System:HopooColor HPG1800
Temperature:25.3DEG
Operators:W
Test Date:2023年07月04日

Test Set: 5.0deg/s C-Gamma (TYPE C)
Humidity:65.0%
Test Distance:8.450 m
Remarks:

ISOCANDELA DIAGRAM

Report number:

MANUFACTURER:		
Address:		
NAME: 200mA 4000K with trim	TYPE:	WEIGHT: 0.5
SPECIFICATION:	DIMENSION: 0.245*0.125*0.07	SERIAL No.:



Test System:HopooColor HPG1800
Temperature:25.3DEG
Operators:W
Test Date:2023年07月04日

Test Set: 5.0deg/s C-Gamma (TYPE C)
Humidity:65.0%
Test Distance:8.450 m
Remarks:

LUMINOUS DISTRIBUTION INTENSITY DATA

Report number:

MANUFACTURER:		
Address:		
NAME: 200mA 4000K with trim	TYPE:	WEIGHT: 0.5
SPECIFICATION:	DIMENSION: 0.245*0.125*0.07	SERIAL No.:

UNIT: cd

C (DEG) γ (DEG)	0	30	60	90	120	150	180	210	240	270	300	330
0.0	185	185	185	185	185	185	185	185	185	185	185	185
5.0	184	184	184	184	184	184	184	185	184	185	184	184
10.0	181	180	181	180	181	180	181	182	180	181	180	182
15.0	176	174	176	173	176	174	176	177	174	176	174	177
20.0	169	167	168	165	168	167	169	170	166	168	166	170
25.0	162	158	159	155	159	158	161	162	157	158	157	161
30.0	153	149	148	144	148	149	153	153	146	148	145	152
35.0	146	139	136	131	136	140	145	143	134	136	133	143
40.0	137	130	124	118	124	130	136	134	122	122	121	133
45.0	128	120	111	105	112	119	126	124	110	109	108	123
50.0	117	109	98.8	90.9	99.4	109	116	113	97.7	95.5	96.3	113
55.0	107	97.3	87.2	76.9	87.8	97.1	104	102	85.6	81.9	84.3	102
60.0	95.0	85.4	75.2	63.1	75.7	85.3	92.4	90.1	73.6	68.0	72.4	89.8
65.0	82.9	73.6	63.2	49.9	63.6	73.6	80.5	78.1	61.9	54.4	60.6	77.8
70.0	70.8	61.4	51.6	36.7	52.0	61.5	68.2	66.2	49.9	41.4	48.8	65.9
75.0	58.4	49.4	39.9	24.4	40.4	49.6	56.1	54.2	38.5	28.7	37.3	53.7
80.0	46.5	38.4	28.9	13.6	29.5	38.9	44.9	42.9	27.9	17.0	26.7	42.1
85.0	36.2	28.9	19.7	5.21	20.4	29.8	35.1	33.1	19.0	7.78	17.7	32.0
90.0	28.7	22.9	13.3	1.21	14.1	24.2	28.9	26.2	13.5	2.21	12.0	24.7
95.0	25.4	20.3	10.5	0.93	11.3	21.4	25.9	22.8	11.1	1.14	9.78	21.4
100.0	22.6	17.8	8.71	1.00	9.21	18.8	22.9	20.1	9.06	1.14	7.92	18.8
105.0	19.9	15.4	6.92	1.14	7.28	16.2	20.1	17.5	7.14	1.21	6.21	16.4
110.0	17.3	13.2	5.21	1.21	5.42	13.8	17.5	14.9	5.35	1.28	4.64	13.9
115.0	14.9	10.9	3.57	1.35	3.64	11.4	14.9	12.6	3.57	1.35	2.99	11.7
120.0	12.4	8.78	2.21	1.49	2.28	9.21	12.3	10.2	2.21	1.49	1.85	9.63
125.0	10.0	6.49	1.71	1.57	1.64	6.71	9.85	7.78	1.64	1.57	1.64	7.28
130.0	7.49	4.35	1.71	1.71	1.71	4.42	7.14	5.42	1.71	1.71	1.71	5.06
135.0	5.06	2.49	1.85	1.78	1.85	2.57	4.71	3.35	1.85	1.78	1.85	3.14
140.0	2.92	1.99	1.92	1.92	1.92	1.92	2.64	2.07	1.92	1.92	1.92	2.07
145.0	2.14	1.99	1.99	1.99	1.99	1.99	2.14	2.14	2.07	2.07	2.07	2.14
150.0	2.14	2.14	2.14	2.14	2.07	2.07	2.21	2.21	2.14	2.14	2.14	2.21
155.0	2.21	2.21	2.14	2.21	2.14	2.14	2.28	2.21	2.21	2.21	2.21	2.21
160.0	2.21	2.21	2.28	2.28	2.21	2.21	2.35	2.28	2.28	2.28	2.28	2.28
165.0	2.28	2.28	2.28	2.28	2.28	2.28	2.42	2.35	2.35	2.35	2.35	2.35
170.0	2.35	2.35	2.35	2.35	2.35	2.28	2.42	2.42	2.35	2.42	2.42	2.42
175.0	2.42	2.42	2.35	2.35	2.35	2.35	2.49	2.42	2.42	2.42	2.42	2.42
180.0	2.42	2.42	2.42	2.42	2.42	2.42	2.42	2.42	2.42	2.42	2.42	2.42

Test System:HopooColor HPG1800
Temperature:25.3DEG
Operators:W
Test Date:2023年07月04日

Test Set: 5.0deg/s C-Gamma (TYPE C)
Humidity:65.0%
Test Distance:8.450 m
Remarks: